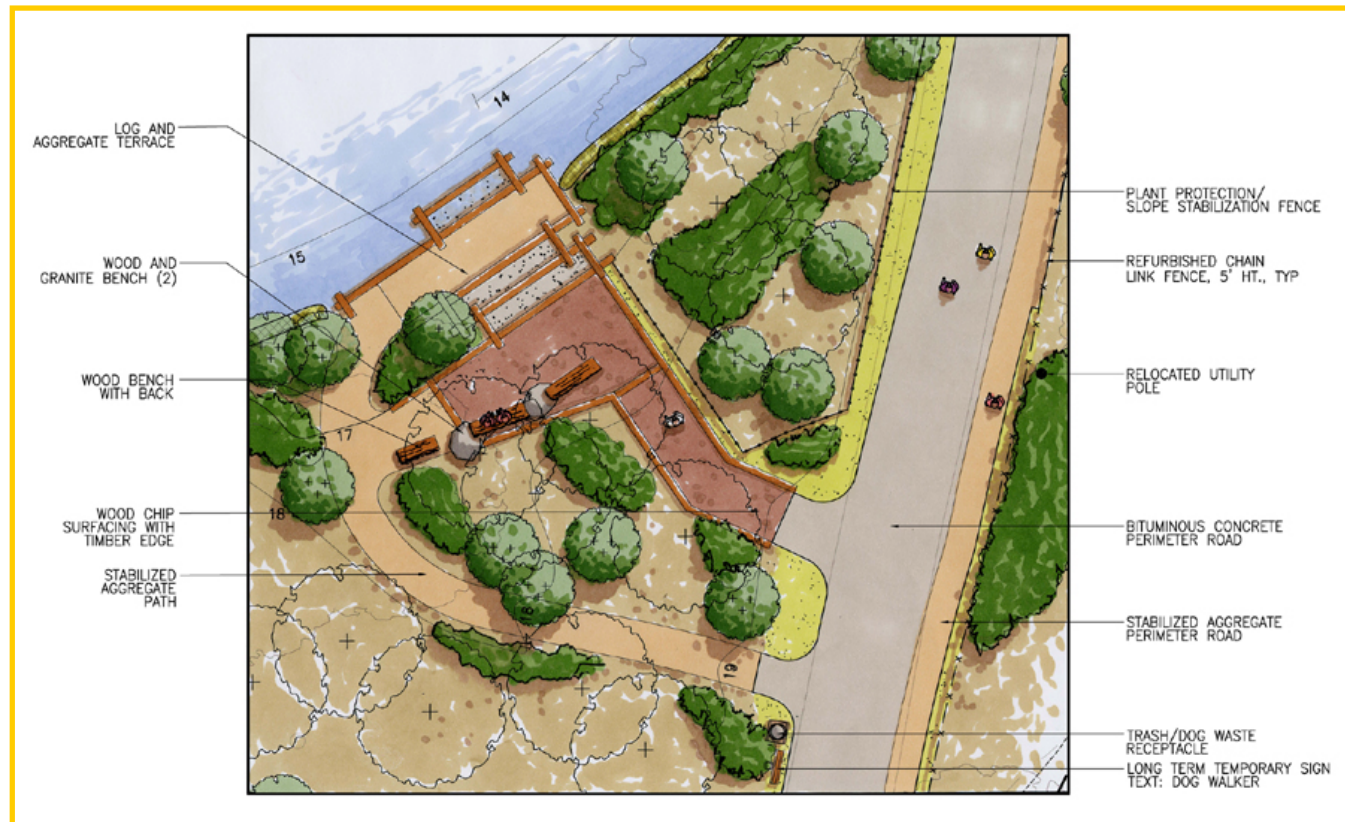


## Little Fresh Pond Shoreline Stabilization Project Southeast Access



The above drawing is a plan for the southeast access point on Little Fresh Pond. Log and aggregate steps lead up to a viewing platform and down into the water. A wheelchair accessible path, in tan, also leads to the upper level. The darker brown area represents a wood chip path (not wheel-chair accessible) leading to the steps.